



Application area

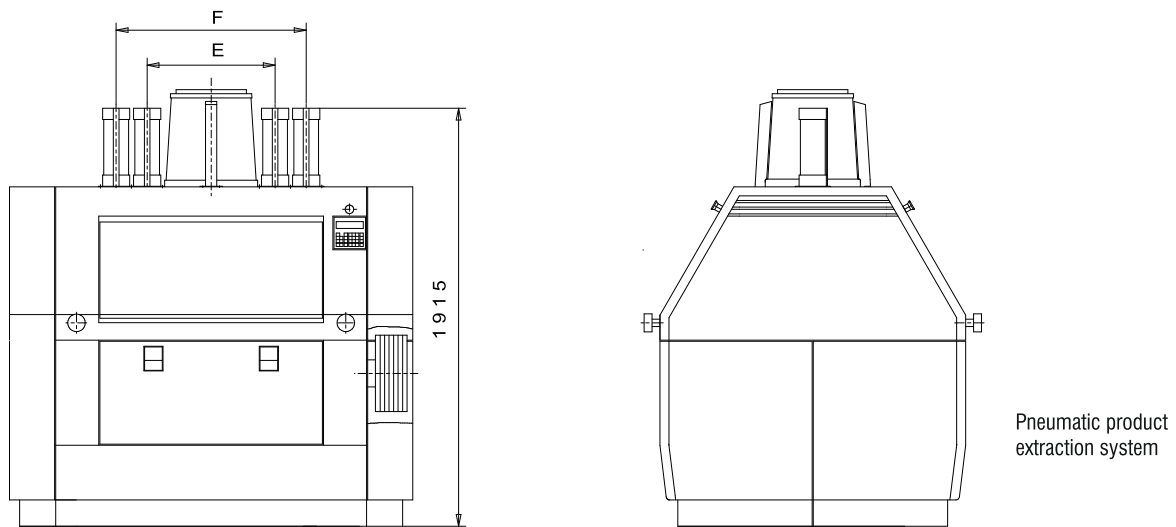
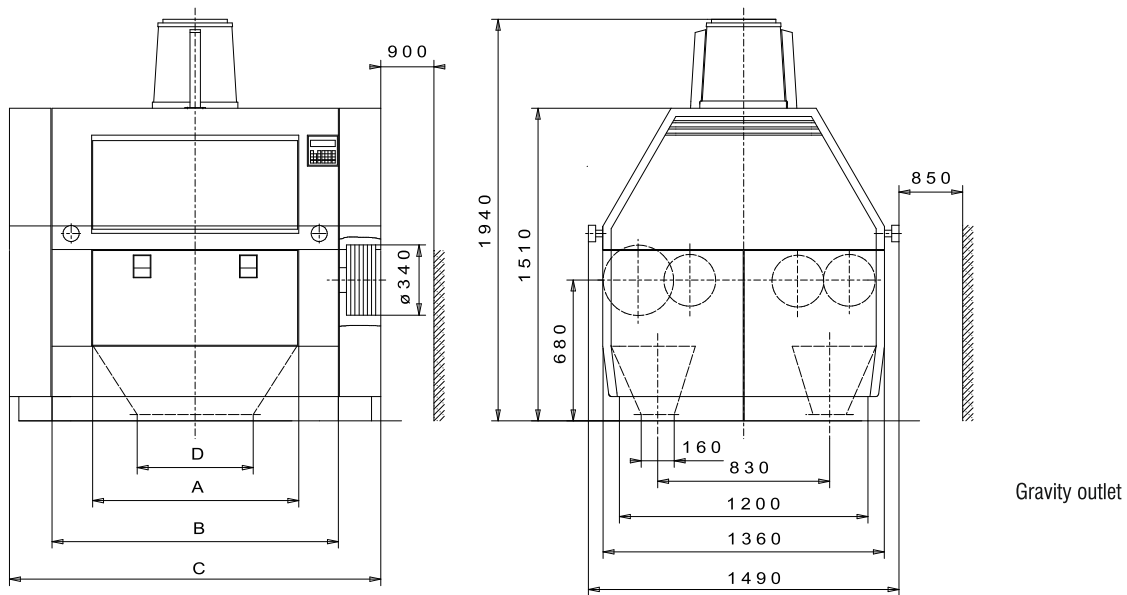
- Milling and grinding of wheat, rye, triticale, spelt or other types of grain and additional products of food industry like spices and so on
- Also usable in chemical industries and other sectors where products must be grinded gently and in stages

Principle of operation

- Product stream which enters the intake is fed into the milling gap by the feed rollers and a feeding control device
- Depending on the application area, the product will be milled, shredded or crushed between the two milling rollers by shearing and/or compression
- Capacity and milling effect are determined essentially by the length of the milling rollers, their surface properties and condition, the peripheral speed and the size of milling gap as well

Main features

- Compact construction, easy handling and low space requirement
- Low maintenance
- Simple installation
- Product discharging either pneumatically or by gravity
- Under floor drive
- ATEX conformity available on request



Type	Roll		Dimensions						Inlet		Weight
	Ø	Length	A	B	C	D	E	F	Single	Double	
	(mm)	(mm)	(mm)	(mm)	(mm)	(mm)	(mm)	(mm)	(Ø mm)	(Ø mm)	(kg)
WS 4 - 600	250	600	610	993	1400	560	456	-	315	102 oder 127	2700
WS 4 - 800	250	800	810	1193	1600	560	606	-	315	102 oder 127	2950
WS 4 - 1000	250	1000	1010	1393	1800	750	568	844	315	102 oder 127	3200
WS 4 - 1250	250	1250	1260	1643	2050	750	568	844	315	102 oder 127	3500

We reserve the right to make technical modifications.
MMW 2011/07